

Farm Retirement AUCTION

LOCATION: 10200 289th Ave SE, Sawyer, ND 58781
 From Sawyer, ND: 11 miles south on County 23, 2-1/2 miles west on County 22.
 From ND 83 & County 22, 7-1/2 miles east.

THURSDAY, FEBRUARY 28 | 10AM 2019

AUCTIONEER'S NOTE: Major equipment begins selling at 10:30 AM. Live online bidding available on major equipment. Registration, terms, & details at SteffesGroup.com.



4WD & MFWD TRACTORS

2011 John Deere 9630, 4WD, deluxe cab, active seat, buddy seat, 5 hyd., high flow pump, return flow, diff lock, power mirrors, HID lights, rotary beacon, air seeder hookup, full weight pkg., front suitcase weights, inside rear suitcase weights, Michelin 800/70R38 tires at 80%, 1,651 hrs., S/N1RW9630PPBP025032
1995 John Deere 8970, 4WD, 24 spd., 4 hyd., diff lock, John Deere 200 ATU steering wheel w/resume, Field Cruise, 9-pin connector, GreenStar wiring, full rear suitcase weight pkg., Michelin 520/85R42 factory triples, 6,892 hrs., S/NRW8970H003282
1997 John Deere 8300, MFWD, deluxe cab, powershift, 4 hyd., 3 pt. quick hitch, 1000 PTO, diff lock, Field Office, 9-pin connector, integrated auto steer, front suitcase weights, rear weights, Michelin 480/80R46 press steel duals, Michelin 16.9-30 front tires w/fenders, 5,766 actual hrs., S/NRW8300P012032



TRACTOR LOADER BACKHOE

Caterpillar 430D tractor loader backhoe, 4WD, CAH, extend-a-hoe, shuttle shift, quick tach bucket, front bucket, 24" bucket, pallet forks, 19.5-24 rear tires, approx. 4,000 hrs., S/NCAT0430DPBKN06027



GPS EQUIPMENT

(3) John Deere Starfire 3000 globes, SF1, S/NPCGT3TA691665, S/NPCGT3TA301368, S/NPCGT3TA361933
John Deere ITC globe, SF1
John Deere 2630 display, SF1, 1,591 hrs., S/NPCGU2UA350562
John Deere brown box display w/processor, SF1 card, 4,004 hrs., S/NPF80444-2.5



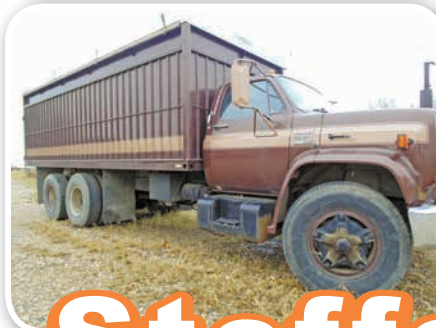
COMBINE

2008 John Deere 9870, STS, Contour-Master, premium cab, deluxe controls, PRWD, 5 spd. feeder house, integrated auto steer, Y&M, large/small wire concaves & round bar, TouchSet, 22' high cap. unloading auger, fine cut chopper, Maurer hopper ext., HID lights, Michelin 620/70R42 press steel duals, 750/65R26 rear tires, 1,760 sep. hrs., 2,807 engine hrs., S/NHO9870S725975



HEADS & HEADER TRAILER

2011 MacDon D60-S draper head, 35', finger reel, John Deere mounts, slow spd. transport, S/N210354
2009 John Deere 635 flex head, 35', full finger auger, fore/aft, low dam,



HEADS & HEADER TRAILER

poly, AWS wind bar, stubble lights, S/N731793
1995 John Deere 914 pickup head w/14' Rakeup pickup, wind guard, S/N660948
John Deere 843 corn head, 8x30", knife rolls, oil drive flex shaft, gear box out on (1) row
1988 John Deere 853A all crop head, 8x30", factory sides & back, flex shafts, S/N625499
Frontier HT12-38 tandem axle header trailer, torsion axle, lights & bracket, S/NXFHT12X800040

SWATHER & CANOLA ROLLER

John Deere 590 pull-type swather, 30', auto fold, finger reel, 1000 PTO, canola end cutter, S/N823897
Canola roller, poly

GRAIN CART

2010 Unverferth 9250 grain cart, 1,000 bu., scale, roll tarp, 1000 PTO, Trelleborg 900/60R32 singles, S/NB27-560-108

PLANTER & AIR SEEDER

John Deere 7200 planter, 16x30", MaxEmerge, vacuum, front fold, 2 pt., 1.6 bu. hoppers, insecticide boxes, liquid fert., piston pump, 1/2 width disconnect, row cleaners, hyd. markers
2010 Flexi-Coil 5000HD air seeder, 51', 10" space, 550 trip shanks, 4" rubber packer wheels, full floating hitch, Dutch eagle beak openers, w/1910 John Deere 430 bu. cart, 3 compartment, vari-rate, belted hyd. fill auger, walking tandems, double shoot, light pkg., (2) black rollers, (1) yellow roller, 16.5-16.1 front tires, 30.5-32 rear tires, Air Seeder S/NYBS003041, Cart S/N710234, **Black & green rollers**

TILLAGE EQUIPMENT

2012 Salford I2100RTS vertical tillage, 41', (33) hyd. shanks, 8-wave coulters, 3-bar harrow, rolling basket, rear hyd. hitch
Mandako land roller, 45', 42" drum, 5/8" wall, S/N2-11-40-1
John Deere 1810 chisel plow, 52', full floating hitch, tandems across, set-up w/Raven NH3 cold flow, Valmar 2055 granular applicator, Summers 9/16 3-bar harrow, electric winch, tow hitch, all New Tires
John Deere 610 chisel plow, 41', tandems across, single pt. depth, 3-bar harrow
John Deere 1010 field cultivator, 36', tandems across, 3-bar harrow
John Deere 331 HD tandem disc, 30', 9" space, dual carrier wheels

TILLAGE EQUIPMENT

Summers harrow, 70', hyd. fold, adj. sections

ROW CROP EQUIPMENT

John Deere 845 row crop cultivator, 12x30", flat-fold, spring shank, gauge wheels
Alloway stalk shredder, 8x30", 3 pt., L-knives, 1000 PTO, rear tires, S/N527516

SLEEPER SEMI TRACTORS & TRUCK

2008 Kenworth W900L studio mid-roof sleeper, ISX Cummins, 580 hp., 18 spd., air ride, air slide, engine brake, 150 gal. twin aluminum fuel tanks, dual stainless air cleaners, dual stainless exhaust, 278" WB, 336 rear tires, 295/75R22.5 tires on full aluminum rims, 523,738 actual miles
1995 Kenworth T600 Aerocab, N14 Cummins Red Top, 13 spd., air ride, air slide 5th, engine brake, twin aluminum fuel tanks, quarter fenders, 236" WB, 336 rear tires, 285/75R24.5 low pro tires on full aluminum rims, shows 890,996 miles
1987 Kenworth W900 conventional, 36" bunk, 855 Cummins, Big Cam IV, 13 spd., air ride, air slide 5th, twin aluminum fuel tanks, quarter fenders, 230" WB, 355 rear tires, 285/75R24.5 tires on full aluminum rims, 719,142 actual miles
1978 GMC 6500 Sierra Grande tag tandem, 427 V8, 5&2 spd., twin fuel tanks, plumbed for drill fill, 20' Buffalo box, hoist, electric hyd. lift, combo gate, roll tarp, 87,370 miles

SERVICE TRUCK

1998 Chevrolet 3500 Silverado tonneau dually, ext. cab, 454, automatic, 4WD, 8' service body, 270 gal. fuel tank w/12v pump, 25 gpm, Honda gas compressor, Honda EW 171 gas generator/welder, Montezuma toolbox, side tool compartments, multi-receiver hitch, 61,315 miles

HOPPER BOTTOM & SPRAY TRAILERS

2006 Wilson DWH550B hopper bottom, 43'x102"x84", ag hopper, air ride, single row lights, roll tarp, 11-24.5 tires on full aluminum rims
1995 Wilson DWH-40 hopper bottom, 43'x96"x78" w/24" electric high rise, ag hopper, air ride, single row lights, New roll tarp, 11-24.5 tires on full aluminum rims
1986 Fruehauf tandem axle flatbed, 48', spring susp., (4) 1,500 gal. poly

HOPPER BOTTOM & SPRAY TRAILERS

tanks, 50 gal. mix tank, 30 gal. mix tank, Honda transfer pump, plumbed 2" hose, 11-22.5 tires on steel rims

SPRAYER

2012 John Deere 4830 self-propelled sprayer, 100' boom, 5-way nozzle bodies, 5-section control, 1,000 gal. SS tank, 3" fill, fence row nozzle, integrated auto steer, John Deere 2630 display, 1,109 hrs., SF2, section control, auto boom, hyd. tread adj., HID lights, front suitcase weights, 380/90R46 tires, 1,007 engine hrs., 301 spray hrs., Sprayer S/N1NO4830XPB0018383, Display S/NPCGU2UA337334
380/90R46 tires, rims & hubs for John Deere 4830 sprayer

NH3 TANKS

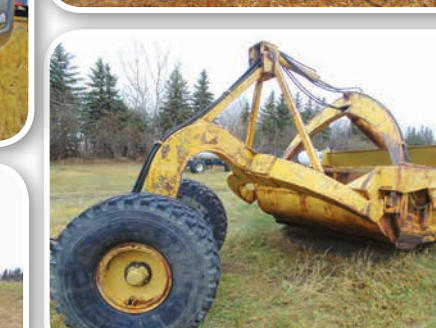
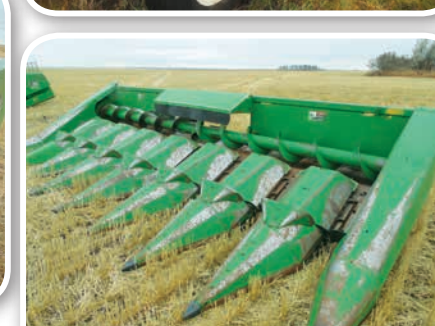
B&B side-by-side twin NH3 tanks, 1,450 gal., BKT flotation tires
Duo-Lift 1,500 gal. NH3 tank, flotation tires
P&H 1,500 gal. NH3 tank, flotation tires
(2) 1,000 gal. NH3 tanks, plumbed together, rear track eliminator
(2) 1,000 gal. NH3 tanks, plumbed together, rear track eliminator

BAGGER & GRAIN HANDLING EQUIPMENT

2010 AkRon E9250 grain bagger, 9', 540 PTO, S/N09422079
Walinga 614 Deluxe grain vac, 1000 PTO, cleanup pkg., extra pipe & flex tubing, S/NLX95056450
Batco 1385 tube conveyor, 85x13", PTO drive
Buhler Farm King 1385 auger, 85x13", mechanical swing hopper, low pro hopper, 540 PTO
Farm King auger, 70x10", mechanical swing hopper, single auger hopper, 540 PTO, w/reverser
Westfield auger, 61x10", PTO

SCRAPERS & OTHER EQUIPMENT

John Deere 1810E scraper, 18 yd., direct mount, hyd. eject, 20.5-25 rear tires, S/NT81810E001185
Letourneau 811 hyd. pull-type scraper, hyd. eject, converted
Summers 700 rotary rock picker, hyd. drive, hyd. tongue adj. hitch, S/N0022
Inland DD110 snowblower, 3 pt., 110" hyd. spout control, hyd. auger, 1000 PTO, S/N1093



JOHNNY HERR | 701.722.3975 OR 701.720.3976

or Brad Olstad at Steffes Group, 701.237.9173 or 701.238.0240

SteffesGroup.com

Steffes Group, Inc., 2000 Main Avenue East, West Fargo, ND 58078 | 701.237.9173

Brad Olstad ND319, Scott Steffes ND81, Bob Steffes ND82, Max Steffes ND999, Ashley Huhn ND843, Eric Gabrielson ND890, Randy Kath ND894, Scott Gillespie ND1070, Shelly Weinzell ND963



TERMS: All items sold as is where is. Payment of cash or check must be made sale day before removal of items. Statements made auction take precedence over all advertising. \$35 documentation fee applies to all titled vehicles. Titles will be mailed. Canadian buyers need a bank letter of credit to facilitate border transfer.